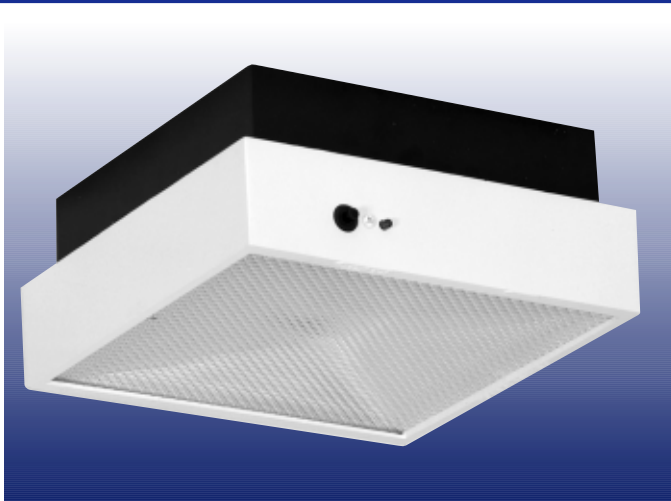


# PS Series 6 and 12 Volt Square Shooter



The **PS Series** is architecturally designed to harmonize with a variety of interiors. Units are available as surface mount, semi-recessed mount or fully recessed mount. The Square Shooter has a 172 X 172 beam distribution pattern.

## UL Listed

Complies with NEC, Life Safety Code and OSHA. Approved use in the Commonwealth of Pennsylvania.

## Sealed Maintenance-Free Batteries

• Nickel Cadmium • Long Life Lead • Lead Calcium

## Standard Features

**Reliability** The PS Series comes complete with a 3-year full warranty.

**Unit Data** Surface mount, semi-recessed units and fully recessed kits are constructed of an off-white, impact resistant, flame retardant, polymeric material. Fully recessed, "FRM" option units have an all metal back box. All furnished standard with one halogen lamp (6 volt 6 watt or 12 volt 8 watt).

**PulsePlus Charger** PulsePlus circuitry offers 120/277 volt input 60 Hz., 0.3 Amp (other inputs available), fused output circuit(s), temperature compensated charger, sealed relay, low voltage battery disconnect, brownout protection and lockout (automatic battery connect).

## Unit Rating Chart

6 volt unit furnished with 6 watt Halogen lamp(s).  
12 volt unit furnished with 8 watt Halogen lamp(s).

UNIT EQUIPMENT - NO REMOTE CAPABILITY						
Sealed Maintenance-Free Battery Types	D. C. Voltage	Model Number	*Watts to 87 1/2% of rated battery voltage			
			1 1/2 hrs.	2 hrs.	3 hrs.	4 hrs.
Long Life Lead +Δ	6	PSE9	9	7	-	-
Lead Calcium	6	PSM9	9	6	-	-
UNIT EQUIPMENT - WITH REMOTE CAPABILITY						
Nickel Cadmium	6	PSC18	18	12	9	6
	6	PSC18-2	18	12	9	6
	6	PSC25	25	18	12	9
	6	PSC25-2	25	18	12	9
	12	12PSC36	36	21	15	12
Long Life Lead +Δ	6	PSE18	18	11	8	6
	6	PSE18-2	18	11	8	6
	6	PSE36	36	24	17	13
	6	PSE36-2	36	24	17	13
	12	12PSE36	36	24	17	13
	12	12PSE36-2	36	24	17	13

\*National Electrical Code Specification -2 indicates two lamp version  
+ = PulsePlus Diagnostics Available Δ = Advanced Diagnostics Available

## How To Order (example)

For standard units without options only order Series, Battery, and Watts  
**PS - C - 18 - \*(HA) - TD(5)**

Options are added to units by listing suffix at end of model #

Series	Battery Type	Watts	Lamp Option	Option
	nickel cadmium	for 90 min.	6V 6W tungsten	Time delay 5 min.

Includes standard lamp  
\*see lamp data sheet in lighting fixture section for other lamp wattages.

## Optional Features

### Description

### Add Suffix

Ammeter **OR** voltmeter (choose only one) not available FR models. .A\* **OR** V\*  
PulsePlus **OR** advanced diagnostics (choose only one).....PPD **OR** AD  
Dual lamps.....2  
Time delay (Specify 5, 10 or 15 minutes).....TD\*\*  
Non-standard input voltage.....Specify  
Polycarbonate lens .....PL  
Fully-recessed all metal unit.....FRM\*\*\*  
Unit color in black.....B

### Accessories (order as a separate item)

Semi-recessed kit (converts a surface mount unit to semi-recessed).....PS-SRKIT\*\*\*  
Fully-recessed kit (converts a surface mount unit to fully-recessed) .....PS-FRKIT\*\*\*  
Wire guard (surface or semi-recessed) .....WG1  
Wire guard (fully-recessed) .....WG11  
(2) 24" adjustable bar hangers for drywall construction.....BH  
(2) 27" adjustable bar hangers for suspended grid ceilings.....TBH

\*Not available with diagnostics options.

\*\*Not required when using the AD option.

\*\*\*Bar hangers included.

## Outline and Dimensions

Dimensions are approximate and subject to change.

